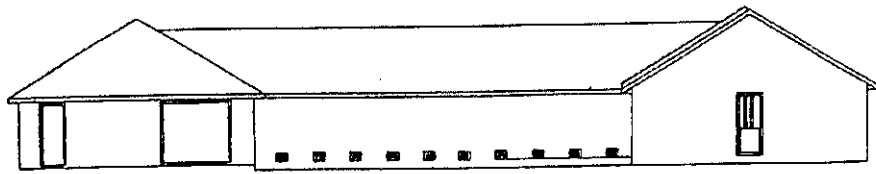


Homeward Bound



On April 3, 1997, the Animal Protection League announced the establishment of a capital building fund and fundraising campaign to build a state-of-the-art animal adoption center, emergency rescue and medical treatment facility, spay/neuter clinic, shelter, and community resource center.

Years of careful planning and expert advice have resulted in a design that incorporates the latest technology and amenities in a premier facility for the animals, the care-givers, and the general public. Homeward Bound design elements include the best advice of the HSUS, the AHA, the ASPCA, and many other experts and models across the country. Particular consideration has been given to the comfort and quality of care for the animals. The Community Resource Center within Homeward Bound is sure to be unequalled in excellence and access for all.

Facility plans call for a 2,500 square foot building with an expansion plan of an additional 1,000 square feet on a two acre site just west of Burlington. The shelter will include 24 dog kennel/runs and a cattery design for 30 cats and kittens. Expansion plans will increase the facility's capacity by as much as 50 percent. The APL's foster care and placement network program will remain as a vital component of a successful shelter operation.

Won't you help in our quest to build this much needed facility? Your support will help our forgotten animal friends who offer unconditional love and ask so little in return. You can make a difference for them.

Homeward Bound Capital Campaign
Animal Protection League
2111 S. Third St.
Burlington, IA 52601
Phone: 319-753-0401

Homeward Bound

Your Support Will Save Precious Lives

YES! I want to help. I have enclosed my tax-deductible contribution of \$ _____.

(An IRS approved donation receipt will be sent to you.)

Your gift of \$10, \$15, \$25, \$50 or more is greatly needed and appreciated. We will reach our goal one small step at a time. On behalf of the animals, we extend our heartfelt thank you.

Consider a Gift of:

- | | |
|------------------|--|
| \$ 100 | You, your family, a loved one, your company, or organization's name will be engraved on a plate attached to a carrier or movable cage. |
| \$ 500 | Be permanently recognized in either the canine kennels or the cattery as a primary benefactor. |
| \$ 1,000 | Have your gift recognized for all time on our "Pathway of Hope" in the Homeward Bound entrance. |
| \$ 5,000 or more | A permanent tribute prominently engraved on our wall of "Guardian Angels" |